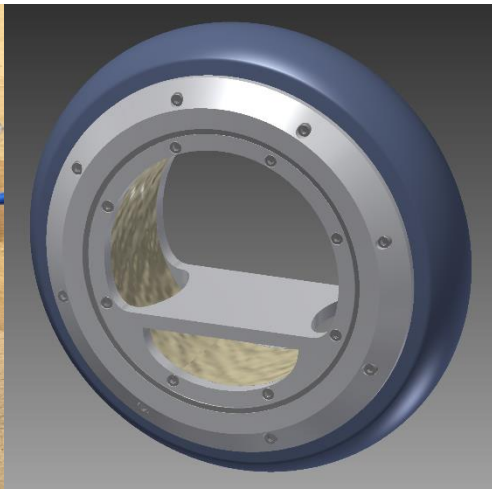
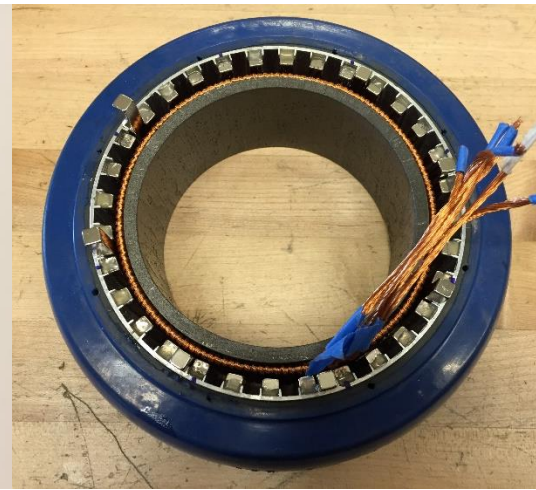
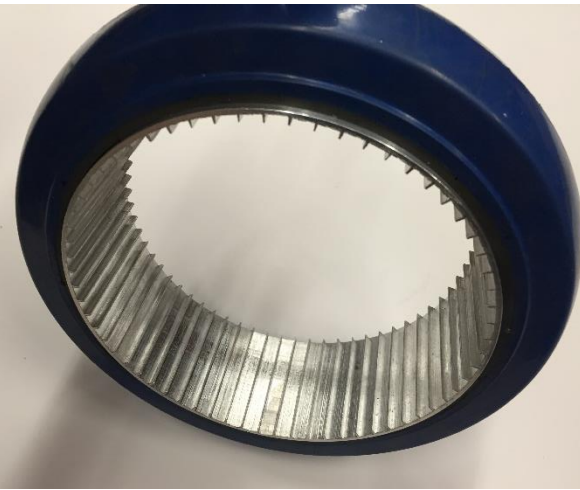


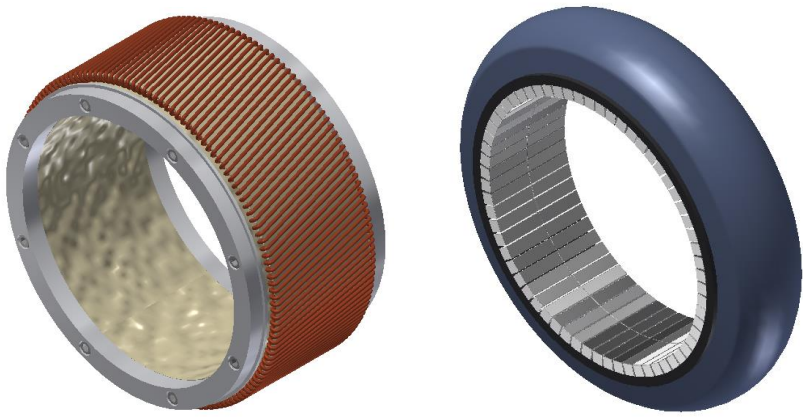
A Rideable Hubless Hub Motor: Electric Orbit Wheels Version 2

Level: Undergraduate Design

Jaguar Kristeller



Design & Specifications



Windings: Litz wire wound diagonally around a 3D printed mold.

Stator: Soft magnetic composite slot-less core
1 ccm iron powder : 1 ccm epoxy

Rotor: Thin aluminum can with 1/4" broached slots

Magnets: Halbach array of N50 1/4" x 1/4" x 1" neodymium magnets

Battery: 4.4Ah at 39.6V A123 12s2p pack stored with controller in backpack



How Do they Work?

